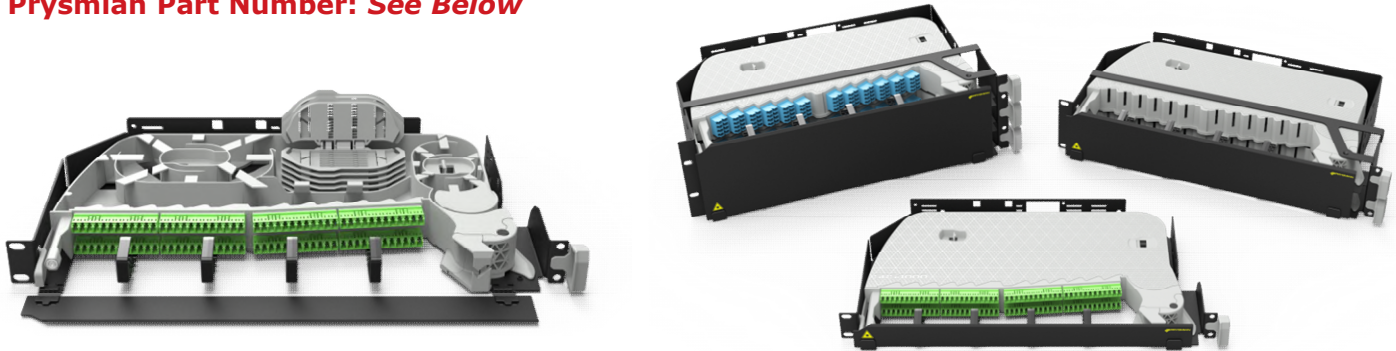


SRS4000 Distribution Sub-Rack

Prysmian Part Number: See Below



The SRS4000 Distribution Sub-Rack is a modular sub-rack available in a variety of configurations for integration into 19" / ETSI / ANSI racks, street-side cabinets or wall mounted cabinets. The product consists of a metal chassis available in 1U, 2U and 3U into which a choice of modules are loaded. The module types available are Splice and Patch, Patch Only, Splice Only, Patchcord Storage and connectorised splitter. This allows users to customise the product for different applications whilst using the same building blocks in each sub-rack.

The splice and patch, splice only and patch only modules can be supplied in 12, 24, 48 or 96 fibre capacities in a 1U unit. They are supplied with a range of connector types for both singlemode and multimode fibre, which can be factory fitted or supplied as a kit. The cable anchoring systems allows all types of optical cables (including blown fibre) to be routed onto the sub-rack and modules.

NOTE: SRS4000 sub-racks do not fit into an existing RS3000 rack.

Features and Benefits

- Modular system for installation into 19" / ETSI / ANSI racks, street-side cabinets and wall mounted cabinets.
- The sub-rack can be supplied fully configured or modules can be supplied empty for upgrading at a later date.
- Chassis are available in 1U, 2U and 3U options are supplied front mounted as standard. Rear mounting brackets are available as an option.
- Fibres are actively managed to minimum bend diameters throughout the Splicing and Patching, Patching only or Splicing only Modules.
- Splicing and bare fibre excess storage is performed inside a tray protected by a cover to prevent any accidental damage when open & closing the shelves.
- Modules pivot outwards for easy access.
- Cables are completely protected from entry to exit of the panel.
- Optical devices (i.e. Splitters & WDM's) can be mounted within the modules. Please contact Prysmian to discuss your requirements)
- Wall mount 19" and ETSI cabinets are also available. Please contact Prysmian for further details.
- Modules have drop down fronts for easier patchcord routing, enclosing patch-cords, and protecting adapters.

Ordering information

The SRS 4000 Sub rack system is supplied with either splice and patch, or patch only modules pre-fitted. To order the item required refer to the part number section on page 3.

Kit Contents

The SRS 4000 Sub rack system is supplied with modules, 1, 2 or 3 ARS cable anchor kit brackets (depending on whether 1U, 2U or 3U) and a rack fixing kit.

Additional Items - Required

- Splice Protectors

Additional Items - Optional

- ETSI Conversion Brackets
- ARS Cable Anchor (additional)
- BEM Cable Anchor
- Upgrade Kits
- Patchcords (see datasheet AC004)

Technical Data

- Max number of splices
 - 1U 96 (LC), 48 (SC), 24 (FC, ST & E2000)
 - 2U 192 (LC), 96 (SC), 48 (FC, ST & E2000)
 - 3U 288 (LC), 144 (SC), 72 (FC, ST & E2000)
- Max number of output patchcords:
 - 1U 96 with 1.6mm diameter patch cords
 - 2U 192 With 1.6mm diameter patch cords
 - 3U 288 with 1.6mm diameter patch cords
- Max Cable Diameter (mm): 14
- Required space envelope (mm):
 - 1U: (w) 480 x (d) 245 x (h) 44.5
 - 2U (w) 480 x (d) 245 x (h) 89.0
 - 3U (w) 480 x (d) 245 x (h) 133.5
- Operating temperature: -20°C to + 60°C (5 to 93% RH)
- Material:-
 - Metalwork: Mild Steel
 - Plastics: High Impact Polystyrene
- Finish:-
 - Metalwork: Painted Black
 - Plastics: Light Grey RAL 7035
- Testing:-
 - Optical: Tested at 1310nm,1550nm and 1625nm
 - Dry heat: BS EN 60068-2-2 Test Bb
 - Damp heat: IEC 60068-2-3: 1969
 - Change of temperature: IEC 60068-2-14: 1984
 - Vibration: IEC 60068-2-6: 1995
 - Shock: IEC 60068-2-27: 1987

Logistics

- Packing Dimensions (mm):-
 - 1U: (w) 525 (d) 330 (h) 80
 - 2U: (w) 525 (d) 330 (h) 240
 - 3U: (w) 525 (d) 330 (h) 240
- Packed Weight (Kg):-
 - 1U: 3.0
 - 2U: 4.6
 - 3U 5.8
- Net Weight (Kg):-
 - 1U: 2.7
 - 2U: 3.8
 - 3U 5.0

Pigtail and Splitter Technical Data

Pigtails are supplied with either xx/UPC or xx/APC connectors.

xx/UPC connectors can be used in cases where xx/PC or xx/SPC connectors are required.

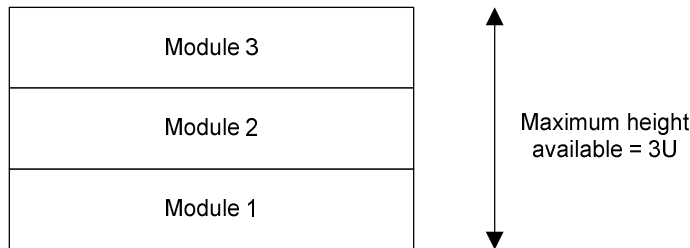
For technical data on the pigtails supplied refer to Prysmian data sheet AC003

For splitter technical data refer to Prysmian data sheet AC005

Part Numbers

The SRS4000 Sub-Rack is supplied with the modules pre-fitted by Prysmian. For Splice and Patch and Patch Only modules, empty modules can be fitted for upgrading with pigtails and adapters at a later date.

Part numbers are built up using a coding system where first the size of the chassis is selected from 1U, 2U and 3U. Next the splice protector type is selected with a choice from crimp or 1.3mm splice protectors or 2.2mm splice protectors. Then the bottom module is selected from the tables on the following pages. Module types available are Splice and Patch, Patch Only, Splice Only and Patchcord Storage with a variety of options for adapters and pigtails. For 2U and 3U Sub-Racks the modules for positions 2 and 3 are selected in the same way.



Examples are shown below for a 1U, 2U and 3U SRS. The module codes are obtained from the tables on the following pages.

EXAMPLE	PRODUCT CODE	DASH	SPLICE PROTECTOR TYPE	DASH	MODULE 1 CODE	DASH	MODULE 2 CODE	DASH	MODULE 3 CODE
1	S4	-	H	-	001				
2	S4	-	C	-	019				
3	S4	-	H	-	001	-	019		
4	S4	-	X	-	107	-	107	-	118

ALWAYS S4
 C = CRIMP OR 1.3mm HS SPLICE PROTECTOR
 H = 2.2mm HS SPLICE PROTECTOR
 X = NONE (FOR PATCH ONLY / SPLITTER SUB-RACKS)

ONLY ENTER CODES FOR MODULES REQUIRED
 FOR 1U ENTER JUST ONE CODE
 FOR 2U ENTER 2 CODES
 FOR 3U ENTER 3 CODES

Example 1 above is for a 1U SRS Sub-Rack. The part number is **S4-H-001**. This denotes a 1U high SRS4000 Sub-Rack fitted with a blank Splice and Patch module. The sub-rack is for use with 2.2mm heat shrink splice protectors.

Example 2 above is for a 1U SRS Sub-Rack. The part number is **S4-C-019**. This denotes a 1U high SRS4000 Sub-Rack fitted with a 24 fibre SC/APC Splice and Patch module. The sub-rack is for use with crimp or 1.3mm heat shrink splice protectors.

Example 3 above is for a 2U SRS Sub-Rack. The part number is **S4-H-001-019**. This denotes a 2U high SRS4000 Sub-Rack fitted with a blank Splice and Patch module in the bottom position and a 24fibre SC/APC Splice and Patch module in the top position. The sub-rack is for use with 2.2mm heat shrink splice protectors.

Example 4 above is for a 3U SRS shelf. The part number is **S4-X-107-107-118**. This denotes a 3U SRS4000 Sub-Rack fitted with two 12f SC/UPC Patch Only modules in the bottom two positions and a 48 fibre SC/APC Patch Only module in the top position. The sub-rack is for use with no splice protectors as it is fully patch only.

Splice and Patch Modules

Splice and Patch modules are used to splice the cable fibres to pigtails for termination. The module is available empty for installation of the pigtails and adapters at a later date, or with the pigtails and adapters pre-fitted. A large variety of capacities and connector types are available as shown in the table below and on the following page.

Connector type	Fibre type	Adaptor type	No of Fibres	Code
None	Two blanking plates to be upgraded later			001
FC/UPC	S/mode	Simplex	12	002
FC/UPC	S/mode	Simplex	24	003
FC/APC	S/mode	Simplex	12	004
FC/APC	S/mode	Simplex	24	005
FC	62.5/125	Simplex	12	006
FC	62.5/125	Simplex	24	007
FC	50/125	Simplex	12	008
FC	50/125	Simplex	24	009
SC/UPC	S/mode	Simplex	12	010
SC/UPC	S/mode	Simplex	24	011
SC/UPC	S/mode	Duplex	12	012
SC/UPC	S/mode	Duplex	24	013
SC/UPC	S/mode	Quad *	24	014
SC/UPC	S/mode	Quad *	48	015
SC/APC	S/mode	Simplex	12	016
SC/APC	S/mode	Simplex	24	017
SC/APC	S/mode	Duplex	12	018
SC/APC	S/mode	Duplex	24	019
SC/APC	S/mode	Quad *	24	020
SC/APC	S/mode	Quad *	48	021
SC	62.5/125	Simplex	12	022
SC	62.5/125	Simplex	24	023
SC	62.5/125	Duplex	12	024
SC	62.5/125	Duplex	24	025
SC	62.5/125	Quad *	24	026
SC	62.5/125	Quad *	48	027
SC	50/125	Simplex	12	028
SC	50/125	Simplex	24	029
SC	50/125	Duplex	12	030
SC	50/125	Duplex	24	031
SC	50/125	Quad *	24	032
SC	50/125	Quad *	48	033

***Note:** For SC connectors where Quad is described, this is actually two duplex adapters next to each other.

For 48f SC or LC modules 2.0mm diameter patch-cords should be used.

For 96f LC modules that 1.6mm diameter patch-cords should be used

Splice and Patch Modules continued

Connector type	Fibre type	Adaptor type	No of Fibres	Code
LC/UPC	S/mode	Duplex	24	034
LC/UPC	S/mode	Duplex	48	035
LC/UPC	S/mode	Quad	24	036
LC/UPC	S/mode	Quad	48	037
LC/UPC	S/mode	12 Way	96	066
LC/APC	S/mode	Duplex	24	038
LC/APC	S/mode	Duplex	48	039
LC/APC	S/mode	Quad	24	040
LC/APC	S/mode	Quad	48	041
LC/APC	S/mode	12 Way	96	067
LC	62.5/125	Duplex	24	042
LC	62.5/125	Duplex	24	042
LC	62.5/125	Duplex	48	043
LC	62.5/125	Quad	24	044
LC	62.5/125	Quad	48	045
LC	62.5/125	12 Way	96	068
LC	50/125	Duplex	24	046
LC	50/125	Duplex	48	047
LC	50/125	Quad	24	048
LC	50/125	Quad	48	049
LC	50/125	12 Way	96	069
E2000/UPC	S/mode	Simplex	12	050
E2000/UPC	S/mode	Simplex	24	051
E2000/APC	S/mode	Simplex	12	052
E2000/APC	S/mode	Simplex	24	053
E2000	62.5/125	Simplex	12	054
E2000	62.5/125	Simplex	24	055
E2000	50/125	Simplex	12	056
E2000	50/125	Simplex	24	057
ST/UPC	S/mode	Simplex	12	058
ST/UPC	S/mode	Simplex	24	059
ST	62.5/125	Simplex	12	060
ST	62.5/125	Simplex	24	061
ST	50/125	Simplex	12	062
ST	50/125	Simplex	24	063

Note:

For 48f SC or LC modules that 2mm diameter patch-cords should be used.

For 96f LC modules that 1.6mm diameter patch-cords should be used

Patch Only Modules

Patch Only modules are used install pre-terminated cables into the SRS shelf for termination. The module is available empty for installation of the adapters at a later date, or with the adapters pre-fitted. A large variety of capacities and connector types are available as shown in the table below and on the following page.

Connector type	Fibre type	Adaptor type	No of Fibres	Code
None	Two blanking plates to be upgraded later			100
FC/UPC	S/mode	Simplex	12	101
FC/UPC	S/mode	Simplex	24	102
FC/APC	S/mode	Simplex	12	103
FC/APC	S/mode	Simplex	24	104
FC	Multimode	Simplex	12	105
FC	Multimode	Simplex	24	106
SC/UPC	S/mode	Simplex	12	107
SC/UPC	S/mode	Simplex	24	108
SC/UPC	S/mode	Duplex	12	109
SC/UPC	S/mode	Duplex	24	110
SC/UPC	S/mode	Quad *	24	111
SC/UPC	S/mode	Quad *	48	112
SC/APC	S/mode	Simplex	12	113
SC/APC	S/mode	Simplex	24	114
SC/APC	S/mode	Duplex	12	115
SC/APC	S/mode	Duplex	24	116
SC/APC	S/mode	Quad *	24	117
SC/APC	S/mode	Quad *	48	118
SC	Multimode	Simplex	12	119
SC	Multimode	Simplex	24	120
SC	Multimode	Duplex	12	121
SC	Multimode	Duplex	24	122
SC	Multimode	Quad *	24	123
SC	Multimode	Quad *	48	124
LC/UPC	S/mode	Duplex	24	125
LC/UPC	S/mode	Duplex	48	126
LC/UPC	S/mode	Quad	24	127
LC/UPC	S/mode	Quad	48	128
LC/UPC	S/mode	12 Way	96	145
LC/APC	S/mode	Duplex	24	129
LC/APC	S/mode	Duplex	48	130
LC/APC	S/mode	Quad	24	131
LC/APC	S/mode	Quad	48	132
LC/APC	S/mode	12 Way	96	146

*Note For SC connectors where Quad is described, this is actually two duplex adapters next to each other.

Note for 48f SC or LC 1U modules that 2mm diameter patch-cords should be used

Patch Only Modules continued

Connector type	Fibre type	Adaptor type	No of Fibres	Code
LC	Multimode	Duplex	24	133
LC	Multimode	Duplex	48	134
LC	Multimode	Quad	24	135
LC	Multimode	Quad	48	136
LC	Multimode	12 Way	96	147
E2000/UPC	S/mode	Simplex	12	137
E2000/UPC	S/mode	Simplex	24	138
E2000/APC	S/mode	Simplex	12	139
E2000/APC	S/mode	Simplex	24	140
E2000	Multimode	Simplex	12	141
E2000	Multimode	Simplex	24	142
ST	SM & MM	Simplex	12	143
ST	SM & MM	Simplex	24	144

Note:

For 48f SC or LC modules 2.0mm diameter patch-cords should be used.

For 96f LC modules that 1.6mm diameter patch-cords should be used

Splice Only Module

Splice Only modules are used to splice the cable fibres directly to connectorised pigtails or for cable jointing within the SRS4000 Sub-Rack. The module can accommodate up to 48 splices and is available in two versions. Version 1 enables the module to splice cable to cable, or cable to blown fibre by using a bulkhead adapter panel for tube retention. Version 2 enables ruggedised pigtails to be spliced to the input cable. It is supplied with a panel to accommodate Aramid restraints.

No of Fibres	Output Cable Type	Code
48	Cable / Blown Fibre	200
48	Ruggedised Pigtails	201

Splitter Modules

Splitter modules are used to mount pre-connectorised splitters onto adapter panels. A varying number of splitters can be mounted into a module depending on the connector type. The tables below show all of the configurations possible. Both the splitter input legs and output legs are connectorised providing a plug and play solution.

Connector type	Adaptor type	No of Splitters	Splitter Size	Splitter Type	Code
FC/UPC	Simplex	4	1x2	Fused Biconic	400
FC/UPC	Simplex	8	1x2	Fused Biconic	401
FC/UPC	Simplex	2	1x4	Planar Light Circuit	402
FC/UPC	Simplex	4	1x4	Planar Light Circuit	403
FC/UPC	Simplex	1	1x8	Planar Light Circuit	404
FC/UPC	Simplex	2	1x8	Planar Light Circuit	405
FC/UPC	Simplex	1	1x16	Planar Light Circuit	406
FC/APC	Simplex	4	1x2	Fused Biconic	407
FC/APC	Simplex	8	1x2	Fused Biconic	408
FC/APC	Simplex	2	1x4	Planar Light Circuit	409
FC/APC	Simplex	4	1x4	Planar Light Circuit	410
FC/APC	Simplex	1	1x8	Planar Light Circuit	411
FC/APC	Simplex	2	1x8	Planar Light Circuit	412
FC/APC	Simplex	1	1x16	Planar Light Circuit	413
SC/UPC	Simplex	4	1x2	Fused Biconic	414
SC/UPC	Simplex	8	1x2	Fused Biconic	415
SC/UPC	Duplex	4	1x2	Fused Biconic	416
SC/UPC	Duplex	8	1x2	Fused Biconic	417
SC/UPC	Quad*	4	1x2	Fused Biconic	418
SC/UPC	Quad*	8	1x2	Fused Biconic	419
SC/UPC	Quad*	12	1x2	Fused Biconic	420
SC/UPC	Simplex	2	1x4	Planar Light Circuit	421
SC/UPC	Simplex	4	1x4	Planar Light Circuit	422
SC/UPC	Duplex	2	1x4	Planar Light Circuit	423
SC/UPC	Duplex	4	1x4	Planar Light Circuit	424
SC/UPC	Quad*	4	1x4	Planar Light Circuit	425
SC/UPC	Quad*	8	1x4	Planar Light Circuit	426
SC/UPC	Simplex	1	1x8	Planar Light Circuit	427
SC/UPC	Simplex	2	1x8	Planar Light Circuit	428
SC/UPC	Duplex	1	1x8	Planar Light Circuit	429
SC/UPC	Duplex	2	1x8	Planar Light Circuit	430
SC/UPC	Quad*	2	1x8	Planar Light Circuit	431
SC/UPC	Quad*	4	1x8	Planar Light Circuit	432
SC/UPC	Simplex	1	1x16	Planar Light Circuit	433
SC/UPC	Duplex	1	1x16	Planar Light Circuit	434
SC/UPC	Quad*	1	1x16	Planar Light Circuit	435
SC/UPC	Quad*	2	1x16	Planar Light Circuit	436
SC/UPC	Quad*	1	1x32	Planar Light Circuit	437

Connector type	Adaptor type	No of Splitters	Splitter Size	Splitter Type	Code
SC/APC	Simplex	4	1x2	Fused Biconic	438
SC/APC	Simplex	8	1x2	Fused Biconic	439
SC/APC	Duplex	4	1x2	Fused Biconic	440
SC/APC	Duplex	8	1x2	Fused Biconic	441
SC/APC	Quad*	4	1x2	Fused Biconic	442
SC/APC	Quad*	8	1x2	Fused Biconic	443
SC/APC	Quad*	12	1x2	Fused Biconic	444
SC/APC	Simplex	2	1x4	Planar Light Circuit	445
SC/APC	Simplex	4	1x4	Planar Light Circuit	446
SC/APC	Duplex	2	1x4	Planar Light Circuit	447
SC/APC	Duplex	4	1x4	Planar Light Circuit	448
SC/APC	Quad*	4	1x4	Planar Light Circuit	449
SC/APC	Quad*	8	1x4	Planar Light Circuit	450
SC/APC	Simplex	1	1x8	Planar Light Circuit	451
SC/APC	Simplex	2	1x8	Planar Light Circuit	452
SC/APC	Duplex	1	1x8	Planar Light Circuit	453
SC/APC	Duplex	2	1x8	Planar Light Circuit	454
SC/APC	Quad*	2	1x8	Planar Light Circuit	455
SC/APC	Quad*	4	1x8	Planar Light Circuit	456
SC/APC	Simplex	1	1x16	Planar Light Circuit	457
SC/APC	Duplex	1	1x16	Planar Light Circuit	458
SC/APC	Quad*	1	1x16	Planar Light Circuit	459
SC/APC	Quad*	2	1x16	Planar Light Circuit	460
SC/APC	Quad*	1	1x32	Planar Light Circuit	461
ST	Simplex	4	1x2	Fused Biconic	462
ST	Simplex	8	1x2	Fused Biconic	463
ST	Simplex	2	1x4	Planar Light Circuit	464
ST	Simplex	4	1x4	Planar Light Circuit	465
ST	Simplex	1	1x8	Planar Light Circuit	466
ST	Simplex	2	1x8	Planar Light Circuit	467
ST	Simplex	1	1x16	Planar Light Circuit	468
LC/UPC	Duplex	4	1x2	Fused Biconic	469
LC/UPC	Duplex	8	1x2	Fused Biconic	470
LC/UPC	Duplex	12	1x2	Fused Biconic	471
LC/UPC	Quad	4	1x2	Fused Biconic	472
LC/UPC	Quad	8	1x2	Fused Biconic	473
LC/UPC	Quad	12	1x2	Fused Biconic	474
LC/UPC	Duplex	4	1x4	Planar Light Circuit	475
LC/UPC	Duplex	8	1x4	Planar Light Circuit	476
LC/UPC	Quad	4	1x4	Planar Light Circuit	477
LC/UPC	Quad	8	1x4	Planar Light Circuit	478
LC/UPC	Duplex	2	1x8	Planar Light Circuit	479
LC/UPC	Duplex	4	1x8	Planar Light Circuit	480
LC/UPC	Quad	2	1x8	Planar Light Circuit	481
LC/UPC	Quad	4	1x8	Planar Light Circuit	482
LC/UPC	Duplex	1	1x16	Planar Light Circuit	483
LC/UPC	Duplex	2	1x16	Planar Light Circuit	484
LC/UPC	Quad	1	1x16	Planar Light Circuit	485
LC/UPC	Quad	2	1x16	Planar Light Circuit	486
LC/UPC	Duplex	1	1x32	Planar Light Circuit	487
LC/UPC	Quad	1	1x32	Planar Light Circuit	488

Connector type	Adaptor type	No of Splitters	Splitter Size	Splitter Type	Code
LC/UPC	12 Way	1	1x64	Planar Light Circuit	601
LC/APC	Duplex	4	1x2	Fused Biconic	489
LC/APC	Duplex	8	1x2	Fused Biconic	490
LC/APC	Duplex	12	1x2	Fused Biconic	491
LC/APC	Quad	4	1x2	Fused Biconic	492
LC/APC	Quad	8	1x2	Fused Biconic	493
LC/APC	Quad	12	1x2	Fused Biconic	494
LC/APC	Duplex	4	1x4	Planar Light Circuit	495
LC/APC	Duplex	8	1x4	Planar Light Circuit	496
LC/APC	Quad	4	1x4	Planar Light Circuit	497
LC/APC	Quad	8	1x4	Planar Light Circuit	498
LC/APC	Duplex	2	1x8	Planar Light Circuit	499
LC/APC	Duplex	4	1x8	Planar Light Circuit	500
LC/APC	Quad	2	1x8	Planar Light Circuit	501
LC/APC	Quad	4	1x8	Planar Light Circuit	502
LC/APC	Duplex	1	1x16	Planar Light Circuit	503
LC/APC	Duplex	2	1x16	Planar Light Circuit	504
LC/APC	Quad	1	1x16	Planar Light Circuit	505
LC/APC	Quad	2	1x16	Planar Light Circuit	506
LC/APC	Duplex	1	1x32	Planar Light Circuit	507
LC/APC	Quad	1	1x32	Planar Light Circuit	508
LC/APC	12 Way	1	1x64	Planar Light Circuit	602
E2/UPC	Simplex	4	1x2	Fused Biconic	509
E2/UPC	Simplex	8	1x2	Fused Biconic	510
E2/UPC	Simplex	2	1x4	Planar Light Circuit	511
E2/UPC	Simplex	4	1x4	Planar Light Circuit	512
E2/UPC	Simplex	1	1x8	Planar Light Circuit	513
E2/UPC	Simplex	2	1x8	Planar Light Circuit	514
E2/UPC	Simplex	1	1x16	Planar Light Circuit	515
E2/APC	Simplex	4	1x2	Fused Biconic	516
E2/APC	Simplex	8	1x2	Fused Biconic	517
E2/APC	Simplex	2	1x4	Planar Light Circuit	518
E2/APC	Simplex	4	1x4	Planar Light Circuit	519
E2/APC	Simplex	1	1x8	Planar Light Circuit	520
E2/APC	Simplex	2	1x8	Planar Light Circuit	521
E2/APC	Simplex	1	1x16	Planar Light Circuit	522

*Note For SC connectors where Quad is described, this is actually two duplex adapters next to each other.

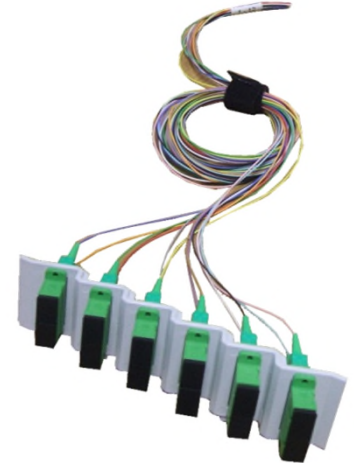
Note for modules containing multiple splitters 2.0mm diameter patch-cords should be used.

Note splitter shelves are supplied with the splitters pre-installed and are not supplied empty.

Additional Items

Splice and Patch Upgrade kits

The Splice and Patch Upgrade kit is used to increase the capacity of splice and patch modules that have been supplied empty or partially populated. The kit enables additional fibres to be installed within the SRS4000 Shelf. The kit comprises of an adaptor plate, adaptors, pigtails, and a splice holder.



Connector type	Fibre type	Adaptor type	Fibres	Part number
FC/UPC	S/mode	Simplex	12	XSRSC00288
FC/APC	S/mode	Simplex	12	XSRSC00291
FC	62.5/125	Simplex	12	XSRSC00289
FC	50/125	Simplex	12	XSRSC00290
SC/UPC	S/mode	Simplex	12	XSRSC00292
SC/UPC	S/mode	Duplex	12	XSRSC00296
SC/UPC	S/mode	Quad *	24	XSRSC00344
SC/APC	S/mode	Simplex	12	XSRSC00295
SC/APC	S/mode	Duplex	12	XSRSC00299
SC/APC	S/mode	Quad *	24	XSRSC00345
SC	62.5/125	Simplex	12	XSRSC00293
SC	62.5/125	Duplex	12	XSRSC00297
SC	62.5/125	Quad *	24	XSRSC00346
SC	50/125	Simplex	12	XSRSC00294
SC	50/125	Duplex	12	XSRSC00298
SC	50/125	Quad *	24	XSRSC00347
LC/UPC	S/mode	Duplex	24	XSRSC00300
LC/UPC	S/mode	Quad	24	XSRSC00304
LC/APC	S/mode	Duplex	24	XSRSC00303
LC/APC	S/mode	Quad	24	XSRSC00307
LC	62.5/125	Duplex	24	XSRSC00301
LC	62.5/125	Quad	24	XSRSC00305
LC	50/125	Duplex	24	XSRSC00302
LC	50/125	Quad	24	XSRSC00306
E2000UPC	S/mode	Simplex	12	XSRSC00308
E2000APC	S/mode	Simplex	12	XSRSC00311
E2000	62.5/125	Simplex	12	XSRSC00309
E2000	50/125	Simplex	12	XSRSC00310
ST/UPC	S/mode	Simplex	12	XSRSC00341
ST	62.5/125	Simplex	12	XSRSC00342
ST	50/125	Simplex	12	XSRSC00343

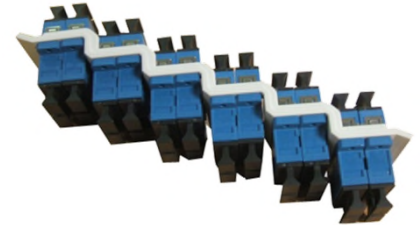
*Note For SC connectors where Quad is described, this is actually two duplex adapters next to each other.

Note for 48f SC or LC 1U modules 2.0mm diameter patch-cords should be used

Additional Items continued

Patch Only Upgrade kits

The Patch Only Upgrade kit is used to increase the capacity of patching modules that have been supplied empty or partially populated. The kit enables additional fibres to be installed within the SRS4000 Shelf. The kit comprises of an adaptor plate and adaptors.



Connector type	Fibre type	Adaptor type	Fibres	Part number
FC/UPC	S/mode & M/mode	Simplex	12	XSRSC00141
FC/APC	S/mode	Simplex	12	XSRSC00142
SC/UPC	S/mode	Simplex	12	XSRSC00144
SC/UPC	S/mode	Duplex	12	XSRSC00145
SC/UPC	S/mode	Quad *	24	XSRSC00146
SC/APC	S/mode	Simplex	12	XSRSC00147
SC/APC	S/mode	Duplex	12	XSRSC00148
SC/APC	S/mode	Quad *	24	XSRSC00149
SC	M/mode	Simplex	12	XSRSC00150
SC	M/mode	Duplex	12	XSRSC00151
SC	M/mode	Quad *	24	XSRSC00152
LC/UPC	S/mode	Duplex	24	XSRSC00153
LC/UPC	S/mode	Quad	24	XSRSC00154
LC/APC	S/mode	Duplex	24	XSRSC00155
LC/APC	S/mode	Quad	24	XSRSC00156
LC	M/mode	Duplex	24	XSRSC00157
LC	M/mode	Quad	24	XSRSC00158
E2000UPC	S/mode	Simplex	12	XSRSC00159
E2000APC	S/mode	Simplex	12	XSRSC00160
E2000	M/mode	Simplex	12	XSRSC00161
ST/UPC	S/mode & M/mode	Simplex	12	XSRSC00162

*Note For SC connectors where Quad is described, this is actually two duplex adapters next to each other.

Note for 48f SC or LC 1U modules that 2mm diameter patch-cords should be used

Additional Items continued

ETSI Conversion Brackets.

ETSI Conversion Brackets enable the SRS4000 sub-racks to be installed into an ETSI rack. They are secured to the unit using four fixing screws. For a 1U shelf one set of brackets is required. For a 2U or 3U shelf two sets of brackets are required.

Prysmian Part No. – XKTSC00171 Grey



Rear Mounting Bracket

The Rear Mounting Bracket is used to install an SRS4000 shelf into a rear mounted rack. The bracket simply bolts to the back of the SRS shelf and provides fixing holes for securing to a rear mounted 19" rack. For a 2U or 3U shelf, two brackets are required.

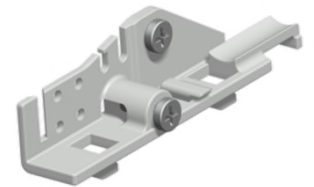
Prysmian Part No. – XSRSC00361



SRS - ARS Cable Anchor

The ARS Cable Anchor kit is used to install an additional cable into an SRS4000 shelf. The kit enables a single cable to be anchored and for the fibres to be distributed onto the shelf. The ARS is suitable for cables between 12 and 48 fibres. Bend limiting routing tubes to protect the fibres being routed to the shelf are also supplied in the kit. The ARS also allows for the anchoring / termination of both the cable strength member and any Aramid with in the cable construction.

Prysmian Part No. – XSRSC00360



BEM Cable Clamp

The BEM Cable Clamp is used to anchor the cable within the rack or to an SRS4000 Mounting Chassis and route the fibres onto the Modules. The BEM is suitable for cables between 36 and 192 fibres. 20 metres of routing tube is supplied with the BEM.

Prysmian Part No. - XEXSC00960 – BEM + 20m of bend limiting tube



Blown Fibre Manifold

The Blown Fibre Manifold is used to take up to 6 blown fibre tubes of 5mm in diameter onto one SRS4000 module. The manifold fits onto the back of the SRS4000 chassis and is supplied with a protective cover.

Prysmian Part No. – XKTSC00257



Additional Items continued

Heatshrink Splice Protector

Splice protectors are used to protect the fibre splice. They are 2.2mm in diameter and 45mm in length.

Prysmian Part No. - XPESC00053 (pack of 50)
- XKTSC00050 (pack of 12)



Crimp Splice Protectors

Crimp Splice Protectors are used to protect the fibre splice. They are 1.3mm wide x 3.2mm high x 30mm long.

Prysmian Part No. - XKTSC00020



Aramid Restraint Kit

The Aramid Restraint Kit provides strain relief (up to 8Kg) for Aramid yarns from single fibre cables. The restraints are used to anchor the jumper cables onto the SRS4000 Splice Only shelf panel. Each restraint can terminate up to two ruggedised single fibre cables of up to 2.8mm in diameter.

Prysmian Part No. - XAPSC00546 (pack of 10)



Connector Removal Tool

The connector removal tool is used to aid removal of SC connectors in applications where a 48 fibre shelf is used. In this application the connectors are close together and can be difficult to remove by hand. The removal tool allows the installer to remove the connector with ease.

Prysmian Part No. - XKTSC00286



Please contact your local sales office listed on www.prysmiangroup.com

© Prysmian Group 2017, All Rights Reserved.

The information contained within this document must not be copied, reprinted or reproduced in any form, either wholly or in part, without the written consent of Prysmian Group. The information is believed correct at the time of issue. Prysmian Group reserves the right to amend this specification without notice. This specification is not contractually valid unless specifically authorised by Prysmian Group.